

Lost Dogs

If you have lost your dog please contact the Cornwall Council Dog Warden Service on 0300 1234 100

All dogs are required by law to wear a dog collar and tag bearing the name and address of the owners. If you are on holiday it is wise to have a temporary tag with your holiday address on it.

For further information visit the **Environment and Planning section** on www.cornwall.gov.uk and follow the link through **Animal Welfare**

or email them on envhealthandlicensing@cornwall.gov.uk



Further Information

If you would like further information on Cornwall and dog friendly establishments please contact VisitCornwall on (01872) 322900



or e-mail enquiries@visitcornwall.com

alternatively visit www.visitcornwall.com



Take a closer look...

Trebah Garden

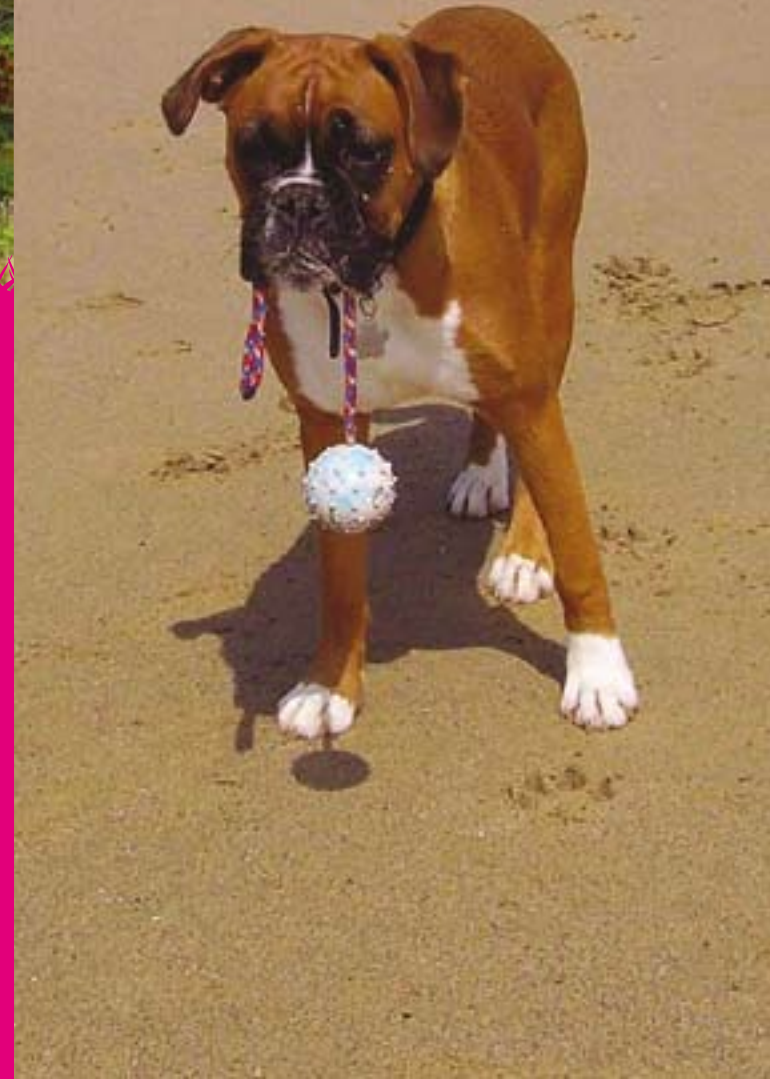
Discover the breathtaking beauty of this sub-tropical valley garden, with over 4 miles of footpaths and 5,000 plants from all over the world. Open all year round, dogs are always welcome at Trebah, on a lead please! Trebah – it's excitingly different.

Open daily from 10am
Mawnan Smith, Nr Falmouth Telephone 01326 252200
Visit www.trebah-garden.co.uk

www.visitcornwall.com

FREE GUIDE

Cornwall Visitor Guide for Dog Owners



Welcome to the Cornwall Visitor Guide for Dog Owners, here to help you explore Cornwall's beaches, gardens, nurseries and attractions with all the family including four legged members. The guide also includes dog friendly pubs and enables you to be prepared for the unexpected with day care kennels, vets, pet shops and emergency contact information.



Dog Welfare

Please remember that in hot weather beaches may not be the ideal place to take your dog. Due to the lack of shade or inadequate fresh water, your dog may suffer from heat related problems.

If you are concerned about any dog welfare issue, such as a dog left in a car during hot weather, please contact the RSPCA on 0300 1234999 24 hour service (calls at BT national rates).

Dog Bins

Please note that The Dogs (Fouling of Land) Act 1996 and The Clean Neighbourhoods and Environment Act 2005 apply. Beaches are the most common areas patrolled by officers enforcing the above Act and fixed penalty notices are issued on a regular basis, so please pick up after your dog and where available use the dog waste bins provided.

1 Lappa Valley Steam Railway D5

Benny Halt, St Newlyn East, Newquay, Cornwall TR8 5LX

Tel: (01872) 510317

E-mail: info@lappavalley.co.uk

Web: www.lappavalley.co.uk
(visit our website for further information)



Info: Well-behaved dogs on leads will enjoy our three train rides and our woodland walks. The rest of the family will love our boating lake, play areas, crazy golf and cafe!

Boarding Kennels**1 Canine Country Club** G1

Morton Folly, Youlstone, Bude, Cornwall EX23 9PT

Tel: (01288) 331216

E-mail: jackie@caninecountryclub.co.uk

Web: www.caninecountryclub.co.uk



Info: Canine Country Club is the country's 1st luxury dog hotel. With just 15 large, individual rooms and daily activities, each guest is guaranteed individual attention, exercise and care during their stay. Licensed, day care available.

2 Rosetown Kennels & Cattery E5

Pitsmingle Bungalow, Roche, St. Austell, Cornwall PL26 8LZ

Tel: (01726) 890531

E-mail: Rosetownkennels2002@yahoo.co.uk

Web: www.rosetown.co.uk

Open: Mon-Sun 9-11am and Mon-Fri 2-5pm & Sun 4-5pm Sat pm closed.



Info: A quality boarding kennels and cattery located 1 mile from the new A30 dual carriageway at Goss Moor, within easy reach of Eden and Heligan gardens suitable for Dog Parking. Licensed, day care available.

1 Dogroom E4

Pell Allema, Rosenannon, nr. Wadebridge PL30 5PJ

Tel: (01637) 889153 / 0785 0510915

E-mail: amin@dogroomcornwall.com

Web: www.dogroomcornwall.com

Open: Mon-Fri 10am-5pm.
Advanced booking required



Info: Dogroom offers a professional dog grooming service specialising in hand stripping' with experience in dog handling and animal care. We pay particular attention to your individual dogs needs and offer a pick-up and drop-off service. Servicing North and Mid Cornwall.

Gardens**1 Pencarrow** E4

Washaway, Bodmin PL30 3AG

Tel: (01208) 841369

E-mail: info@pencarrow.co.uk

Web: www.pencarrow.co.uk

Open: Gardens: Daily 1 Mar-31 Oct, 9.30am-5.30pm. House Tours: Easter to end of Sept, Sun-Thurs inclusive 11am-3pm. Café, Shop and Plants: Sun-Thurs. inclusive 11am-5pm.



Info: A surprise around every corner – family owned Grade 2* listed garden. Find an iron age fort, Victorian rockery, Italian garden, ice house, lakeside and woodland walks for your dogs off leads! You can also visit the fine Georgian house with its superb collections of paintings, porcelain and some antique dolls.

2 Trebah Garden D7

Mawnan Smith, Nr Falmouth TR11 5JZ

Tel: (01326) 252200

E-mail: mail@trebah-garden.co.uk

Web: www.trebah-garden.co.uk

Open: 10am-5pm all year (winter opening times may vary - see website)



Info: A sub-tropical valley garden full of exotic and beautiful plants from around the world, with streams and ponds, a private beach on the Helford River and an award winning cafe.

3 Trelowarren C7

Trelowarren Estate, Mawgan, Helston TR12 6AF

Tel: (01326) 221224

E-mail: info@trelowarren.com

Web: www.trelowarren.com

Open: To the public from 1 Mar-30 Sept 9am-5pm (8pm Jul/Aug)



Info: Trelowarren is situated at the heart of the Lizard. There are miles of woodland walks through the estate and down to the river. An award winning restaurant onsite and Arts & Craft galleries to visit.

4 Trengwainton Garden A7

The National Trust, Madron, Nr Penzance TR20 8RZ

Tel: (01736) 363148

E-mail: trengwainton@nationaltrust.org.uk

Web: www.nationaltrust.org.uk

Open: 8 Feb-01 Nov '09 and 14 Feb-31 Oct '10 10.30am-5pm. Closed Fri & Sat.



Info: Unusual plants from four continents fill this wooded valley, with its tranquil stream, walled gardens and breathtaking views over Mount's Bay. Dogs welcome everywhere except tea room and its garden.

5 Trevarno Estate C7

Crowtown, Helston TR13 0RU

Tel: (01326) 574274

E-mail: enquiry@trevarno.co.uk

Web: www.trevarno.co.uk

Open: All year (except Christmas Day & Boxing Day) 10:30am-5pm



Info: With 70 acres of gardens and grounds including an extended estate walk, lake and Victorian boathouse, Trevarno is a wonderfully relaxing venue for ALL the family. Dogs on leads welcome.

6 Trewidden A7

Buryas Bridge, Penzance TR20 8TT

Tel: (01736) 363021 / (01736) 351979

E-mail: mail@bolithoestates.co.uk

Web: www.trewiddengarden.co.uk

Open: Daily (Except Mon & Tues) 10 Feb-26 Sept 10:30am-5:30pm (Last Admission 4.30pm)
Open Bank Holiday Mondays



Info: Children under 16 free, dogs welcome on leads. Explore the woodland garden by winding paths through tree ferns in an ancient open-cast mine, past magnificent magnolias, camellias & water features. Views & summer colour in the walled garden. Teas and plant sales.

Nurseries**1 Fir Tree Farm Nursery** C7

Tresahor, Constantine, Falmouth TR11 5PL

Tel: (01326) 340593

E-mail: plants@cornwallgardens.com

Web: www.cornwallgardens.com

Open: Tues to Sat, 10am-5pm, Sun 11am-4pm



OUR NEW INTRODUCTION - DAHLIA CORNISH RUBY

Info: We stock over 4,000 varieties of rare and cottage garden perennials and 100 varieties of clematis and climbers. Gardens (and a field!) for you to walk around.

2 Hardy Exotics B7

Gilly Lane, Whitecross, Penzance, Cornwall TR20 8BZ

Tel: (01736) 740660

E-mail: contact@hardyexotics.co.uk

Web: www.hardyexotics.co.uk

Open: Apr-Oct daily 10am-5pm Nov-Mar, please phone to check times



Info: Hardy Exotics grow a huge exciting collection of Exotic Garden Plants for the English Climate. Personal service, knowledgeable staff all in an exotic garden setting. See how to create 'Barbados in Birmingham' with hardy plants.

1 Fal Valley Pets E6

Fal Valley Tannery, Grampond, Truro, Cornwall TR2 4RX

Tel: (01726) 883988

E-mail: falvalley@fsmail.net

Web: www.falvalleypets.co.uk

Open: Mon-Fri 9am-5.30pm, 9am-5pm Sat



Info: Pet food & accessory retailers offering a fantastic selection of products. Friendly service. Many major brands stocked. Collars, leads, treats, toys, beds (200 kept in stock!), crates, grooming products, etc.

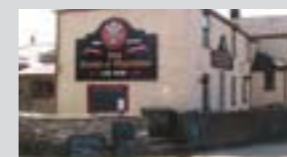
Pubs**1 The Plume of Feathers** C5

Penhallow, Truro, Cornwall TR4 9LT

Tel: (01872) 571389

E-mail: theplume@btinternet.com

Web: www.theplume.co.uk



Info: Set in the small hamlet of Penhallow (on A3075) near the Cornish Cider Farm, the Inn offers a wide range of ales and wines to complement its vast selection of homemade meals.

Vets**1 Amos & Penny** D7

Parc Briwer, Penryn, Cornwall TR10 8LF

Tel: (01326) 378080. 24 hour Emergency Service (01326) 378080

E-mail: amos.penny@zen.co.uk

Web: www.amosandpenny.co.uk

Open: Mon-Fri 8.30am-6.30pm / Sat 8.30am - 12 noon Sun (urgent cases only) 9-11am



Info: A dog-friendly warm welcome awaits all visitors to our small animal practice. We are situated in Penryn and are easily accessible from the A39. Consultations by appointment.

2 Hayle Veterinary Surgery B6

82-84 Commercial Road, Hayle, Cornwall. TR27 4DH

Tel: (01736) 754111

E-mail: haylevets@hotmail.co.uk

Web: www.haylevets.co.uk

Open: Mon - Fri: 8.30am - 6.30pm, Sat: 8.30am - 12.00pm. 24hr Emergency Care provided



Info: Whether local or on holiday our surgery offers a friendly, caring and professional service for all your pets needs. Please phone if you would like an appointment, need advice or in case of an emergency.

3 Penbode Veterinary Group G1

Horizon View, Hillhead, Stratton, Bude, Cornwall EX23 9AB

Tel: (01288) 359500

E-mail: enquiries@penbodevets.co.uk

Web: www.penbodevets.co.uk

Open: 08.30 - 18.00



Info: We offer a 24Hr service to all our clients at all of our companion animal clinics.

4 Penbode Veterinary Group F3

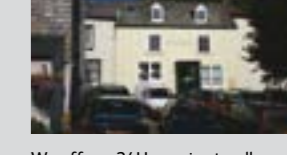
34 Market Place, Camelford, Cornwall PL32 9PD

Tel: (01840) 213277

E-mail: enquiries@penbodevets.co.uk

Web: www.penbodevets.co.uk

Open: 08.30 - 18.00



Info: We offer a 24Hr service to all our clients at all of our companion animal clinics.

5 Rock View Veterinary Surgery E5

10 Tremodrett Road, Roche, St Austell, Cornwall PL26 8JA

Tel: (01726) 890887

E-mail: admin@rvvs.co.uk

Web: www.rvvs.co.uk

Open: Mon - Fri: 8.30am - 6.30pm (Late night Thurs till 7pm), Sat: 8.30am - 12.30pm
24 - hour Emergency Service.



Info: Small animal surgery in Roche, with friendly, caring, professional staff. Consultations by appointment, with free of charge checks for all new pets.

"Quality veterinary care as individual as your pet".

This guide has been produced by VisitCornwall. The information therein was correct at time of going to print. (Summer 2009).



Dog Friendly Beaches - open all year

Beaches - with seasonal dog bans

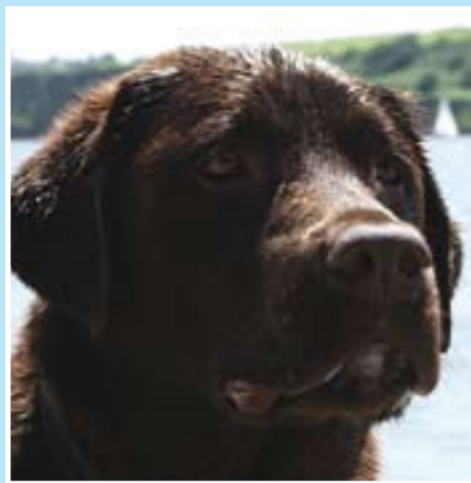
- KEY**
- Swimming
 - Parking
 - Toilets
 - Shop
 - Café
 - Showers
 - Boating
 - Dogs on leads
 - Blue Flag Beach

1	☹️🚰🚻🛒☕🚿🐕🚩	Porthcothan Bay	D4
2	☹️🚰🚻🛒☕🚿🐕🚩	Treyarnon Bay	D4
3	☹️🚰🚻🛒☕🚿🐕🚩	Constantine Bay	D4
4	☹️🚰🚻🛒☕🚿🐕🚩	Harlyn Bay	D4
5	☹️🚰🚻🛒☕🚿🐕🚩	Daymer Bay	E4
6	☹️🚰🚻🛒☕🚿🐕🚩	Trebarwith Strand	E3
7	☹️🚰🚻🛒☕🚿🐕🚩	Widemouth Bay - South Beach only	F2
8	☹️🚰🚻🛒☕🚿🐕🚩	Summerleaze - Bude. Dogs on Lead 21 st May - 30 th Sept 10am-6pm	F1
9	☹️🚰🚻🛒☕🚿🐕🚩	Northcott	F1
10	☹️🚰🚻🛒☕🚿🐕🚩	Sandymouth	F1
11	☹️🚰🚻🛒☕🚿🐕🚩	Kingsand - all facilities nearby	H5
12	☹️🚰🚻🛒☕🚿🐕🚩	Whitsand Bay - swimming unsafe at times	H5
13	☹️🚰🚻🛒☕🚿🐕🚩	Downderry - all facilities nearby	G5
14	☹️🚰🚻🛒☕🚿🐕🚩	Seaton	G5
15	☹️🚰🚻🛒☕🚿🐕🚩	Plaidy Beach	G5
16	☹️🚰🚻🛒☕🚿🐕🚩	Hannafore - West Looe (facilities nearby)	G5
17	☹️🚰🚻🛒☕🚿🐕🚩	Talland Bay	G5
18	☹️🚰🚻🛒☕🚿🐕🚩	Lantivet Bay	F6
19	☹️🚰🚻🛒☕🚿🐕🚩	Lantic Bay - strong rip current	F6
20	☹️🚰🚻🛒☕🚿🐕🚩	Mawgan Porth	D4
21	☹️🚰🚻🛒☕🚿🐕🚩	Watgate Bay/ Whipsidery	D4
22	☹️🚰🚻🛒☕🚿🐕🚩	Great Western/Towan Newquay Harbour	D5
23	☹️🚰🚻🛒☕🚿🐕🚩	Little Fistral	D5
24	☹️🚰🚻🛒☕🚿🐕🚩	Fistral	D5
25	☹️🚰🚻🛒☕🚿🐕🚩	Crantock	D5
26	☹️🚰🚻🛒☕🚿🐕🚩	Coombe Haven - 15 minute walk through steep wooded valley	F6
27	☹️🚰🚻🛒☕🚿🐕🚩	Polidrmouth Beach - 15 minute walk from car park through farm	F6
28	☹️🚰🚻🛒☕🚿🐕🚩	Par Beach	F5
29	☹️🚰🚻🛒☕🚿🐕🚩	Spit Beach - 10 minute walk	F5
30	☹️🚰🚻🛒☕🚿🐕🚩	Hallone - considerable walk through village and wooded valley	E6
31	☹️🚰🚻🛒☕🚿🐕🚩	Polstreath - 10 minute walk on coastal path, steep steps to beach	E6
32	☹️🚰🚻🛒☕🚿🐕🚩	Portmellon - parking on street	E6
33	☹️🚰🚻🛒☕🚿🐕🚩	Colona - considerable walk along coastal path	E6
34	☹️🚰🚻🛒☕🚿🐕🚩	Gorran Haven	E6
35	☹️🚰🚻🛒☕🚿🐕🚩	Vault - Gorran Haven - 20 minute walk through fields	E6
36	☹️🚰🚻🛒☕🚿🐕🚩	Hemnick - car park at Penare, footpath through fields or 10 minute walk through lanes	E6
37	☹️🚰🚻🛒☕🚿🐕🚩	Porthluney - Caerhays	E6
38	☹️🚰🚻🛒☕🚿🐕🚩	Portholland	E6
39	☹️🚰🚻🛒☕🚿🐕🚩	Polgwidenn	D7
40	☹️🚰🚻🛒☕🚿🐕🚩	Gillian Harbour - swimming with care	D7
41	☹️🚰🚻🛒☕🚿🐕🚩	Porthallow - swimming with care	D8
42	☹️🚰🚻🛒☕🚿🐕🚩	Porthoustock - swimming with care	D8
43	☹️🚰🚻🛒☕🚿🐕🚩	Coverack - swimming with care	D8
44	☹️🚰🚻🛒☕🚿🐕🚩	Kennack Sands - East - swimming with care	C8
45	☹️🚰🚻🛒☕🚿🐕🚩	Cadgwith - East - swimming with care	C8
46	☹️🚰🚻🛒☕🚿🐕🚩	Polpeor Cove	C8
47	☹️🚰🚻🛒☕🚿🐕🚩	Pentreath - swimming with care	C8
48	☹️🚰🚻🛒☕🚿🐕🚩	Mullion Cove - swimming with care	C8
49	☹️🚰🚻🛒☕🚿🐕🚩	Gunwalloe - fishing cove - swimming with care	C8
50	☹️🚰🚻🛒☕🚿🐕🚩	Loe Bar	C7
51	☹️🚰🚻🛒☕🚿🐕🚩	Porthleven - swimming with care	C7
52	☹️🚰🚻🛒☕🚿🐕🚩	Prussia Cove - swimming with care	B7
53	☹️🚰🚻🛒☕🚿🐕🚩	West Portholland	E6
54	☹️🚰🚻🛒☕🚿🐕🚩	Cellars Beach	E6
55	☹️🚰🚻🛒☕🚿🐕🚩	Carne Beach	D6
56	☹️🚰🚻🛒☕🚿🐕🚩	Pendower Beach	D6
57	☹️🚰🚻🛒☕🚿🐕🚩	Porthcurnick Beach	D7
58	☹️🚰🚻🛒☕🚿🐕🚩	Towan Beach	D7
59	☹️🚰🚻🛒☕🚿🐕🚩	Porth Bear	D7
60	☹️🚰🚻🛒☕🚿🐕🚩	Trevaunance Cove	C5
61	☹️🚰🚻🛒☕🚿🐕🚩	Perranporth - swimming with care	C5
62	☹️🚰🚻🛒☕🚿🐕🚩	Perran Sands - swimming with care	C5
63	☹️🚰🚻🛒☕🚿🐕🚩	Holywell Bay	C5
64	☹️🚰🚻🛒☕🚿🐕🚩	Long Rock	B7
65	☹️🚰🚻🛒☕🚿🐕🚩	Eastern Green	B7
66	☹️🚰🚻🛒☕🚿🐕🚩	Wherrytown - Larrigan River to Newlyn	A7
67	☹️🚰🚻🛒☕🚿🐕🚩	Roskilly	A7
68	☹️🚰🚻🛒☕🚿🐕🚩	Salt Ponds	A7
69	☹️🚰🚻🛒☕🚿🐕🚩	Pedn Vounder	A8
70	☹️🚰🚻🛒☕🚿🐕🚩	Nanjazel	A8
71	☹️🚰🚻🛒☕🚿🐕🚩	Gwenver	A7
72	☹️🚰🚻🛒☕🚿🐕🚩	Priests Cove	A7
73	☹️🚰🚻🛒☕🚿🐕🚩	Boat Cove	A7
74	☹️🚰🚻🛒☕🚿🐕🚩	Portheras Cove	A7
75	☹️🚰🚻🛒☕🚿🐕🚩	Hor Point	B6
76	☹️🚰🚻🛒☕🚿🐕🚩	Cloddy Point	B6
77	☹️🚰🚻🛒☕🚿🐕🚩	Bamaluz	B6
78	☹️🚰🚻🛒☕🚿🐕🚩	Lambeth Walk	B6
79	☹️🚰🚻🛒☕🚿🐕🚩	Porthkidney	B6
80	☹️🚰🚻🛒☕🚿🐕🚩	Riviere	B6
81	☹️🚰🚻🛒☕🚿🐕🚩	Mexico	B6
82	☹️🚰🚻🛒☕🚿🐕🚩	Upton to Peter's Point	B6
83	☹️🚰🚻🛒☕🚿🐕🚩	Peter's Point	B6
84	☹️🚰🚻🛒☕🚿🐕🚩	Porthcwe (Rinsey)	B7
85	☹️🚰🚻🛒☕🚿🐕🚩	Kennegy Sands	B7

Seasonal Dogs bans – beaches which have a ban from Easter day to 1st October unless otherwise stated. Guide dogs are excepted from dog bans.

1	☹️🚰🚻🛒☕🚿🐕🚩	Trevone Bay	D4
2	☹️🚰🚻🛒☕🚿🐕🚩	St George's Well	E4
3	☹️🚰🚻🛒☕🚿🐕🚩	Polzeath Beach	E3
4	☹️🚰🚻🛒☕🚿🐕🚩	Crackington Haven	F2
5	☹️🚰🚻🛒☕🚿🐕🚩	Widemouth Bay (North Beach Only)	F2
6	☹️🚰🚻🛒☕🚿🐕🚩	Crooklets	F1
7	☹️🚰🚻🛒☕🚿🐕🚩	Cawsand Beach	H6
8	☹️🚰🚻🛒☕🚿🐕🚩	Portwrinkle	H5
9	☹️🚰🚻🛒☕🚿🐕🚩	Whitehouse Beach	F6
10	☹️🚰🚻🛒☕🚿🐕🚩	Readymoney Beach	F6
11	☹️🚰🚻🛒☕🚿🐕🚩	Polkeris Beach	F5
12	☹️🚰🚻🛒☕🚿🐕🚩	Porthean Beach	E6
13	☹️🚰🚻🛒☕🚿🐕🚩	Talcarne (1 st May - 30 th Sept)	D5
14	☹️🚰🚻🛒☕🚿🐕🚩	Lusty Glaze (31 st May - 30 th Sept)	D5
15	☹️🚰🚻🛒☕🚿🐕🚩	Porth Beach	D5
16	☹️🚰🚻🛒☕🚿🐕🚩	Kennack Sands (West - near carpark)	C8
17	☹️🚰🚻🛒☕🚿🐕🚩	Cadgwith Cove (South)	C8
18	☹️🚰🚻🛒☕🚿🐕🚩	Housel Bay, The Lizard	C8
19	☹️🚰🚻🛒☕🚿🐕🚩	Kynance Cove	C8
20	☹️🚰🚻🛒☕🚿🐕🚩	Polurian Cove	C8
21	☹️🚰🚻🛒☕🚿🐕🚩	Poldhu	C8
22	☹️🚰🚻🛒☕🚿🐕🚩	Gunwalloe Church Cove	C8
23	☹️🚰🚻🛒☕🚿🐕🚩	Fistral	B7
24	☹️🚰🚻🛒☕🚿🐕🚩	Pentleven West	B7
25	☹️🚰🚻🛒☕🚿🐕🚩	Pentewan (1 st November - Week prior to Easter)	B7
26	☹️🚰🚻🛒☕🚿🐕🚩	Pras Sands	B7
27	☹️🚰🚻🛒☕🚿🐕🚩	Portreath	C6
28	☹️🚰🚻🛒☕🚿🐕🚩	Tattams Beach	D7
29	☹️🚰🚻🛒☕🚿🐕🚩	Porth Beach	D7
30	☹️🚰🚻🛒☕🚿🐕🚩	Summers Beach	D7
31	☹️🚰🚻🛒☕🚿🐕🚩	Tavern Beach	D7
32	☹️🚰🚻🛒☕🚿🐕🚩	Castle Beach	D7
33	☹️🚰🚻🛒☕🚿🐕🚩	Gyllyngvase Beach	D7
34	☹️🚰🚻🛒☕🚿🐕🚩	Swanpool Beach	D7
35	☹️🚰🚻🛒☕🚿🐕🚩	Maenporth Beach	D7
36	☹️🚰🚻🛒☕🚿🐕🚩	Porthtowan Beach	C6
37	☹️🚰🚻🛒☕🚿🐕🚩	Chapel Porth	C6
38	☹️🚰🚻🛒☕🚿🐕🚩	Perranuthnoe	B7
39	☹️🚰🚻🛒☕🚿🐕🚩	Marazion (Chapel Rock to Long Rock Level Crossing)	B7
40	☹️🚰🚻🛒☕🚿🐕🚩	Penzance Promenade (to Larrigan River)	A7
41	☹️🚰🚻🛒☕🚿🐕🚩	Mousehole (all year ban in harbour)	A7
42	☹️🚰🚻🛒☕🚿🐕🚩	Porthcurno	A8
43	☹️🚰🚻🛒☕🚿🐕🚩	Sennen Cove (including harbour)	A7
44	☹️🚰🚻🛒☕🚿🐕🚩	Porthmeor	B6
45	☹️🚰🚻🛒☕🚿🐕🚩	Porthgwidenn	B6
46	☹️🚰🚻🛒☕🚿🐕🚩	St Ives Harbour	B6
47	☹️🚰🚻🛒☕🚿🐕🚩	Porthminster	B6
48	☹️🚰🚻🛒☕🚿🐕🚩	Carbis Bay	B6
49	☹️🚰🚻🛒☕🚿🐕🚩	Hayle Townans	B6
50	☹️🚰🚻🛒☕🚿🐕🚩	Gwithian (Ceres Rock to Red River)	B6
51	☹️🚰🚻🛒☕🚿🐕🚩	Godrevy (Red River to lighthouse)	B6
52	☹️🚰🚻🛒☕🚿🐕🚩	Porthgwarra	A8
53	☹️🚰🚻🛒☕🚿🐕🚩	Porthchapel (dog ban applies below high water mark only)	A8

N.B. Beaches which have a blue circle next to them have a seasonal ban in place which lasts from 7am to 7pm daily, those marked with a red circle have a seasonal ban from 8am to 7pm daily.



Beaches - with all year dog bans

1	☹️🚰🚻🛒☕🚿🐕🚩	Millendreath Beach	G5
2	☹️🚰🚻🛒☕🚿🐕🚩	East Looe Beach	G5
3	☹️🚰🚻🛒☕🚿🐕🚩	Crinns Beach	E5
4	☹️🚰🚻🛒☕🚿🐕🚩	Charlestown Beach	E5
5	☹️🚰🚻🛒☕🚿🐕🚩	Duporth Beach	E5